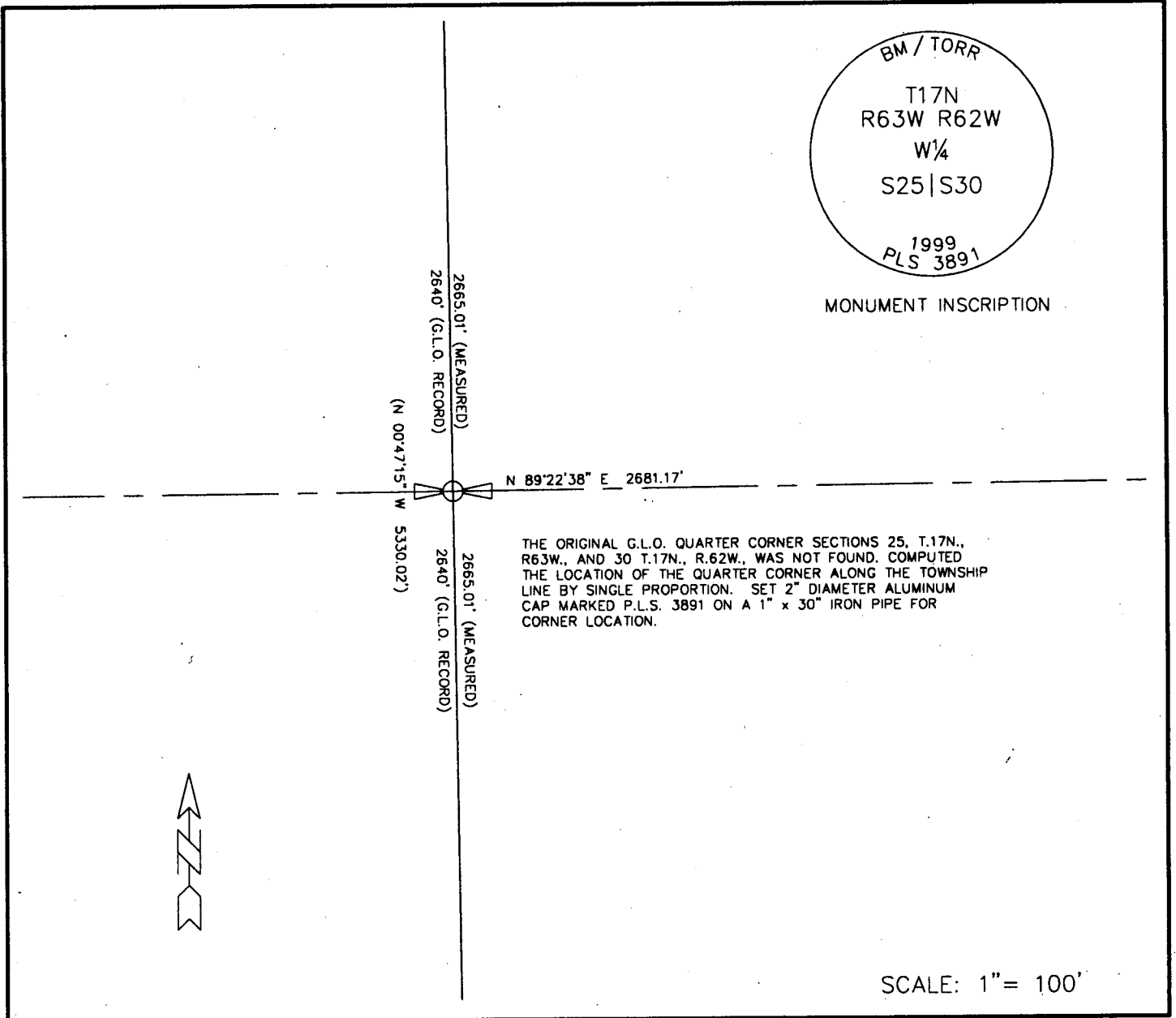


# State of Wyoming Corner Record

(In compliance with the *CORNER PERPETUATION AND FILING ACT*, Wyoming Statutes, 1977, Section 36-11-101, et. seq., and the Rules and Regulations of the Board of Registration for Professional Engineers and Professional Land Surveyors)

Reverse side of this form may be used if more space is needed.

Record of original survey and citation of source of historical information (if corner is lost or obliterated). Description of corner monumentation evidence found and/or monument and accessories established to perpetuate the location of this corner. Sketch of relative location of monument, accessories, and reference points with course and distance to adjacent corner(s) (if determined in this survey). Method and rationale for reestablishment of lost or obliterated corner.



BM / TORR  
 T17N  
 R63W R62W  
 W¼  
 S25|S30  
 1999  
 PLS 3891

MONUMENT INSCRIPTION

THE ORIGINAL G.L.O. QUARTER CORNER SECTIONS 25, T.17N., R.63W., AND 30 T.17N., R.62W., WAS NOT FOUND. COMPUTED THE LOCATION OF THE QUARTER CORNER ALONG THE TOWNSHIP LINE BY SINGLE PROPORTION. SET 2" DIAMETER ALUMINUM CAP MARKED P.L.S. 3891 ON A 1" x 30" IRON PIPE FOR CORNER LOCATION.

SCALE: 1" = 100'

Date of Field Work: JUNE, 1999 Office Reference: T-011762.dwg

### CROSS INDEX DIAGRAM

	1	2	3	4	5	6	7	8	9	10	11	12	13	14	15	16	17	18	19	20	21	22	23	24	25
A																									
B		6																							
C			5																						
D				4																					
E					3																				
F						2																			
G							1																		
H																									
I																									
J																									
K																									
L																									
M																									
N																									
O																									
P																									
Q																									
R																									
S																									
T																									
U																									
V																									
W																									
X																									
Y																									
Z																									

*Firm/Agency, Address*

BenchMark of \_\_\_\_\_  
 Torrington, P.C.  
 2510 West "C" Street · P.O. Box 99  
 Torrington, WY 82240  
 Phone Number: (307) 532-3811

This corner record was prepared by me or under my direction and supervision.  
**SEAL & SIGNATURE**

Corner Name: W¼ CORNER Section: 30 T 17N R 62W ; 6th P.M. Cross-Index No.: T-01  
 SBRPEPLS/PLSW: March 1994